

Which style is best for me?

The receiver is available in two styles:
stetho-style headset or neckloop.

The headset receiver is worn like a stethoscope,
under the chin. The earpieces on the headset come
in two sizes for a comfortable fit. The earpieces also
pivot, maintaining that comfortable fit even when
you change your body position.

The neckloop receiver is particularly versatile.
You can use it with telecoil-equipped hearing aids
or cochlear implant equipment. Even if you don't
wear hearing aids you can still use the neckloop. It
has a 3.5 mm jack that accommodates headphones,
earbuds, in-ear-monitors, personal audio cables,
and specialty induction couplers.

NOTE —

If you have a heart pacemaker, contact your physician
or the manufacturer of the pacemaker to ensure that the
neckloop system does not interfere with your pacemaker.



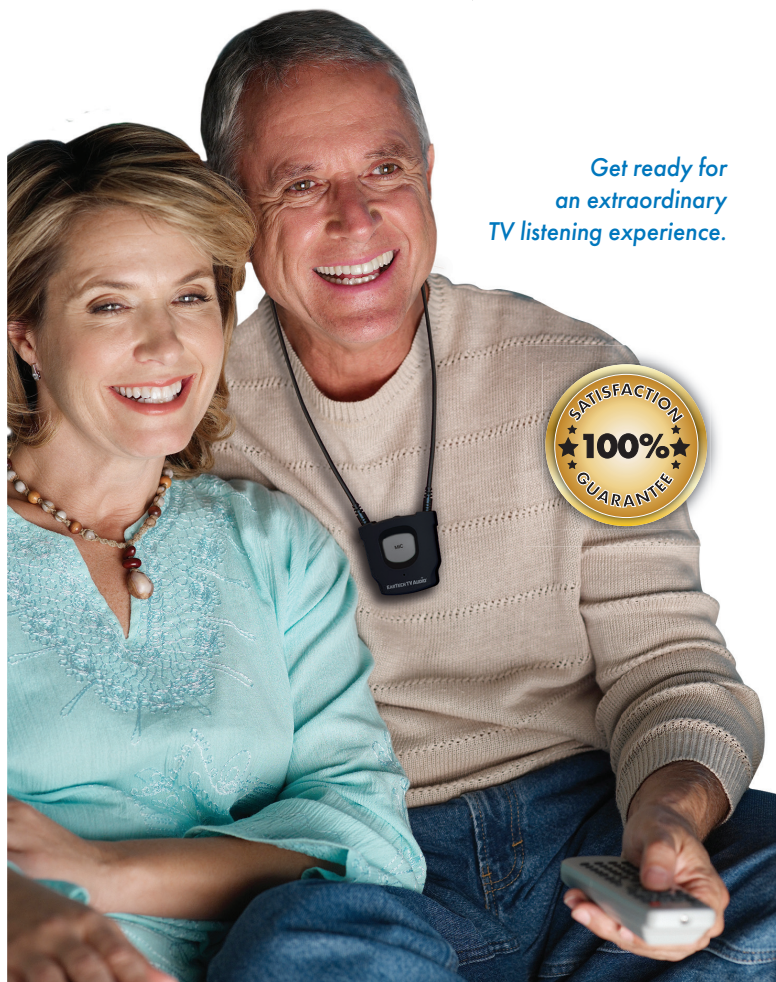
info@eartechtvaudio.com | 1-800-327-8547 | eartechtvaudio.com

**Talk to your hearing healthcare provider to
start enjoying better TV listening today!**



Hear what you see and love what you hear!

*Get ready for
an extraordinary
TV listening experience.*



EARTECHNOLOGY CORPORATION
Helping people hear better, every day.
sm



Do others complain that the TV is too loud?

Do you have difficulty understanding what is said with all that background music?

Get back to TV the way it's supposed to be.

Say "Hello" to EarTech TV Audio.

This amazing, easy-to-use system delivers sound from your TV directly to your ears, at your own personal volume and tone settings. The sound is so crisp and clear, you'll wonder how you got along without it.

You can walk and move around, even into another room, while still listening to the TV.

Easy to set up & operate

The system includes one base unit (transmitter), one receiver (either headset or neckloop) and connection cables to work with any style of TV.

It's expandable too! You can use an unlimited number of receivers with the same transmitter. Imagine several people watching the same show and everybody with their own volume and balance controls.



How does it work?

The base unit/transmitter is connected to your TV. The transmitter sends a digital signal from your TV to a receiver that you wear. (See back panel for receiver options.)

Doctor-recommended for hearing aids with t-coils or anyone having difficulty hearing the TV.

EarTech TV Audio can also be used as an audio transmitter/receiver for small churches and classrooms, using multiple receivers.

Why choose EarTech TV Audio TV premium listening system?

EarTech TV Audio uses advanced digital audio technology, so it won't fade in and out like other systems. The sound quality remains strong and clear up to 100 feet, even through walls.

EarTech TV Audio broadcasts at 2.4 GHz, for wireless transmission of high bit rates without compression while minimizing interference from other electrical devices nearby.

EarTech TV Audio is doctor-recommended, so you can buy with confidence.

*Get ready for an extraordinary TV listening experience.
With EarTech TV Audio, you'll hear what you see
and love what you hear!*

**EAR
TECHNOLOGY
CORPORATION**
Helping people hear better, every day.

info@eartechtvaudio.com | 1-800-327-8547 | eartechtvaudio.com